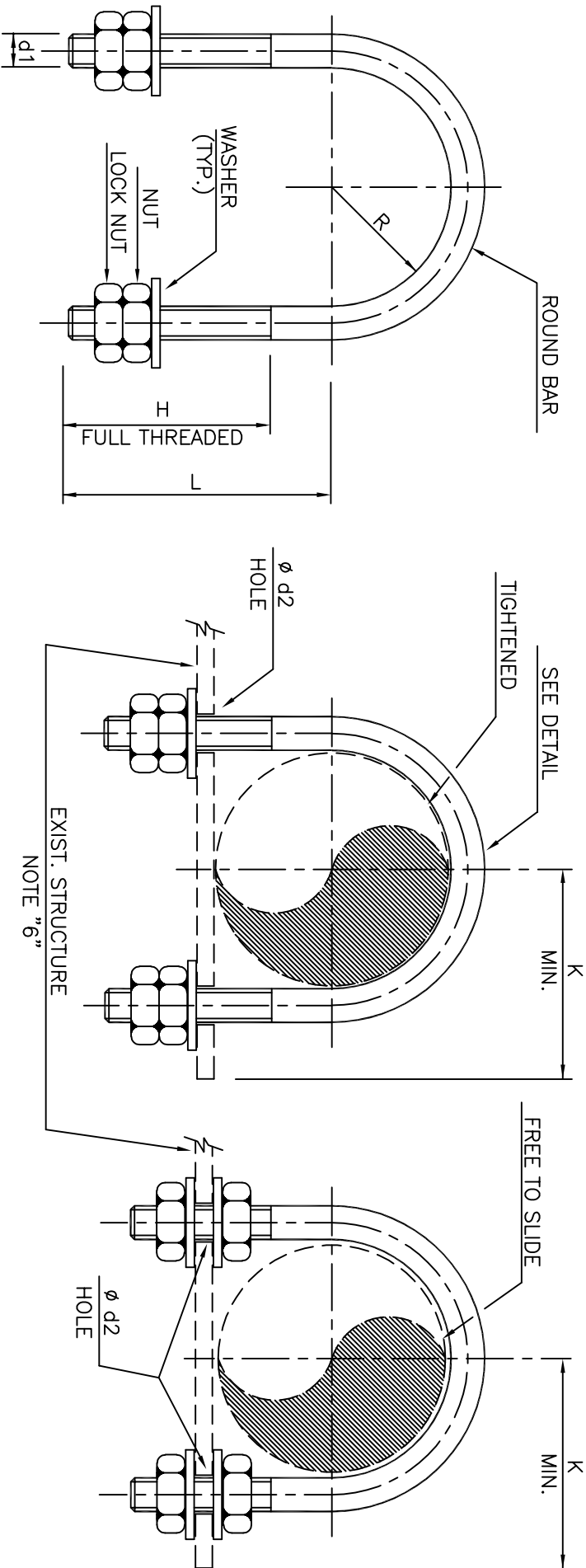


1-ANCHOR TYPE CAN BE APPLIED BY PULLING DOWN THE GUIDE TYPE U-BOLT.
2-"H" AND "L" HAVE BEEN CALCULATED BASED ON PLATE THICKNESS UP TO 18mm. MORE THAN 18mm ALLOWABLE :PADS HAVE BEEN CALCULATED BASED ON T(MAX.)=370 AND MI=0.3,ALSO "FV" , "FL" AND "FA" ARE THE MAX. CONCENTRATED LOAD WHICH ARE APPLIED SEPARATELY.
3-USE FOR UNINSULATED PIPE WITH OPERATING TEMP. 65 C OR BELOW.
EXCEPT FOR FOLLOWING APPLICATIONS.
1) INSULATED PIPING FOR PERSONAL PROTECTION.
2) STEAM LINES FOR TRACING.
3) PICK UP SUPPORTS

SA-01-

- 1 - TYPE MARK
- 2 - NPS MARK



U-BOLT DETAIL

TYPE "A"

ANCHOR TYPE

TYPE "B"

GUIDE TYPE

DIMENSIONS TABLE

NPS MARK	PIPE SIZE		d1	R	H	L	d2	K	DEVELOP. LENGTH	NUT	ALLOWABLE LOAD(KG)		
	NPS	DN									FL	FV	FA
0A	1/2"	15	6	12	40	50	7	50	147	M6	70	200	25
0B	3/4"	20		15		55		55	167		130	500	45
01	1"	25		19		60		60	189		270	700	80
1A	1 1/2"	40		26		65		65	221				
02	2"	50		32		70		70	245				
03	3"	80		47		80		85	317		200	1200	60
04	4"	100		59		95		95	385				
06	6"	150		86		130		130	546				
08	8"	200		112		155		155	677				
10	10"	250		139		190		190	835				
12	12"	300	16	164	60	220	18.5	220	980	M16	240	3500	80
14	14"	350											
16	16"	400											
18	18"	450											
20	20"	500											
24	24"	600	24	310	80	380	28	372	1771	M24	500	6000	150

00	5.6.2024	ISSUED FOR REVIEW	Finalized	M.G.H	L.Zeyniddini	
Rev.	Date	PURPOSE OF ISSUE	Prepared	Checked	Approved	Authorized

COMPANY:
شركة توسعة آهن و فولاد گل گهر
G.I.S.D.Co.

PROJECT:
GISDCo.

INTERNAL PROCEDURE

DRAWING TITLE:

STANDARD FOR PIPE SUPPORT DRAWING

Contract No.	Document No.	Class	Rev.	Size	Scale	Sheet No.